

1

STYLE : S51AM0108
 COLOR : BLK
 DESCRIPTION1 : LEATHER BLOUSON
 SIZE : 36
 PRICE :
 REMARK : PRICE TBC, MAY15 - JUN30

(J)

(E)

3WAY LEATHER JACKET BY MARTIN MARGIELA, LINE1, AVANT PREMIERE. EMPLOYING EVOLUTIONAL 3D SHOULDER CONSTRUCTION THAT TURNS DOWN SHOULDER. DETACHABLE SHAWL COLLAR THAT CAN BE TAGGED IN OR OUT, V-NECK WHEN DETACHED. LAMB LEATHER.



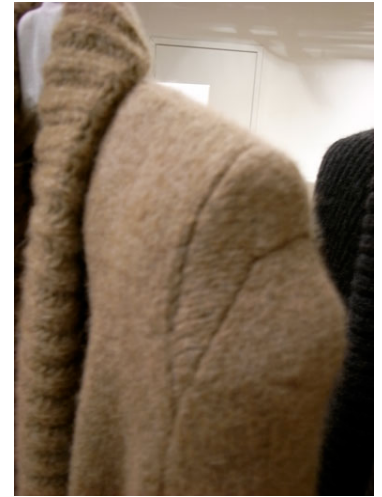
2

STYLE : S51HA0322
 COLOR : CAMEL
 DESCRIPTION1 : KNIT VEST
 SIZE : S
 PRICE : 795
 REMARK : MAY15 - JUN30

(J)

(E)

*YODA'S PICK. KNIT VEST BY MARTIN MARGIELA, LINE1, AVANT PREMIERE. EMPLOYING EVOLUTIONAL 3D SHOULDER CONSTRUCTION. LOW GAGE ALPACA-WOOL, HEAVY WEIGHT. DETACHABLE SHAWL COLLAR, V-NECK WHEN DETACHED. AVAILABLE IN CAMEL OR DARK GRAY.



3

STYLE : S51HA0322
 COLOR : D.GRY
 DESCRIPTION1 : KNIT VEST
 SIZE : S M
 PRICE : 795.00
 REMARK : MAY15 - JUN30

(J)

(E)

*YODA'S PICK. KNIT VEST BY MARTIN MARGIELA, LINE1, AVANT PREMIERE. EMPLOYING EVOLUTIONAL 3D SHOULDER CONSTRUCTION. LOW GAGE ALPACA-WOOL, HEAVY WEIGHT. DETACHABLE SHAWL COLLAR, V-NECK WHEN DETACHED. AVAILABLE IN CAMEL OR DARK GRAY.



4

STYLE : S51CT0371
 COLOR : L. BEIGE
 DESCRIPTION1 : N/S KNIT TUNIC
 SIZE : S
 PRICE : 595.00
 REMARK : MAY15 - JUN30

(J)

(E)

MERINO WOOL VEST BY MARTIN MARGIELA, LINE1, AVANT PREMIERE. DETACHABLE METAL BELT TO TIE AROUND ARMPIT AND CREATE SEXY SILHOUETTE. LIGHT WEIGHT. AVAILABLE IN LIGHT BEIGE OR BLACK.



5

STYLE : S51CT0371
 COLOR : BLK
 DESCRIPTION1 : N/S KNIT TUNIC
 SIZE : S M
 PRICE : 595.00
 REMARK : MAY15 - JUN30

(J)

(E)

MERINO WOOL VEST BY MARTIN MARGIELA, LINE1, AVANT PREMIERE. DETACHABLE METAL BELT TO TIE AROUND ARMPIT AND CREATE SEXY SILHOUETTE. LIGHT WEIGHT. AVAILABLE IN LIGHT BEIGE OR BLACK.



6

STYLE : S51KA0195
 COLOR : BLK
 DESCRIPTION1 : 3WAY PANTS
 SIZE : 36 38
 PRICE : 765.00
 REMARK : MAY15 - JUN30

(J)

(E)

3WAY JUMPSUIT-PANTS BY MARTIN MARGIELA, LINE1, AVANT PREMIERE. WEAR AS PANTS WITH MINI SKIRT. SKIRT PARTS BECOME TOP. WEAR AS NO-SLEEVE JUMPSUIT OR ONE-SHOULDER JUMPSUIT. VISCOSE/WOOL.

