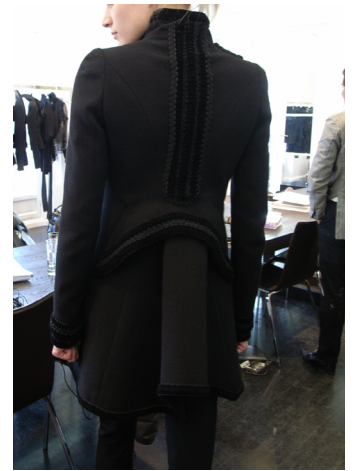


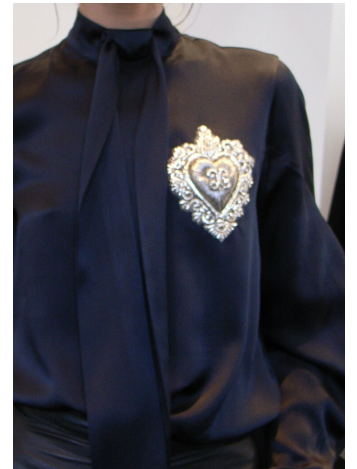
## #1

1. STYLE: 817201 05
2. COLOR: BLACK
3. SIZE: 38
4. PRICE: \$3935
5. DESCRIPTION: RT WOOL COAT W/VEL-VET & LACE EMBROIDERY



## #2

1. STYLE: 816063 22
2. COLOR: BLACK
3. SIZE: 34, 36
4. PRICE: \$1600
5. DESCRIPTION: SATIN BLOUSE W/ EMBROIDERED HEART



## #3

1. STYLE: 815047 36
2. COLOR: BLACK
3. SIZE: 34, 36, 38
4. PRICE: \$1045
5. DESCRIPTION: PLEAT FRONT CREPE DE CHINE PANT



## #4

1. STYLE: 816208 40
2. COLOR: NATURAL
3. SIZE: 36, 38
4. PRICE: \$2200
5. DESCRIPTION: GEARGETTE BLOUSE W/ RUFFLE & TIE AROUND NECK



## #5

1. STYLE: 818822 75
2. COLOR: BLACK
3. SIZE: 34, 36, 40
4. PRICE: \$340
5. DESCRIPTION: LONG COTTON TEE DRESS W/ SATIN FRONT & PRINT



## #6

1. STYLE: 816835 75
2. COLOR: BLACK
3. SIZE: 34, 36
4. PRICE: \$475
5. DESCRIPTION: OVERSIZED SLYLSS SWEATSHIRT



## #7

1. STYLE: 812809 62
2. COLOR: BLACK
3. SIZE: 34, 36
4. PRICE: \$2020
5. DESCRIPTION: STRETCH JERSEY DRESS



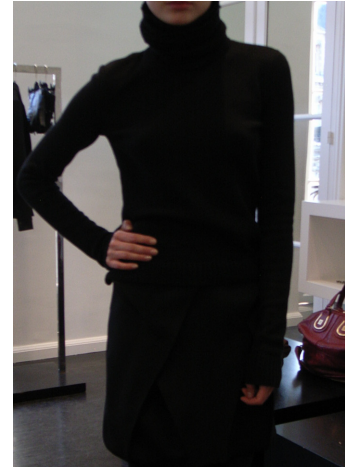
## #8

1. STYLE: 816843 78
2. COLOR: BLACK
3. SIZE: 34, 36
4. PRICE: \$1650
5. DESCRIPTION: DEEP V-NECK MERINO W/ EMBROIDERED HEART



## #9

1. STYLE: 816839 79
2. COLOR: BLACK
3. SIZE: 36, 40
4. PRICE: \$1650
5. DESCRIPTION: WOOL/CASHMERE RUFFLED T-NECK



## #10

1. STYLE: 816873 81
2. COLOR: WHITE
3. SIZE: 34, 36
4. PRICE: \$1760
5. DESCRIPTION: SCOOP NECK FINE WOOL SWEATER W/ BLACK PRINT ON FRONT



## #11

1. STYLE: 817003 16
2. COLOR: BLK
3. SIZE: 36
4. PRICE: \$2440
5. DESCRIPTION: SHORTER LACQUERED DOWN JKT W/ KNIT TRIM

